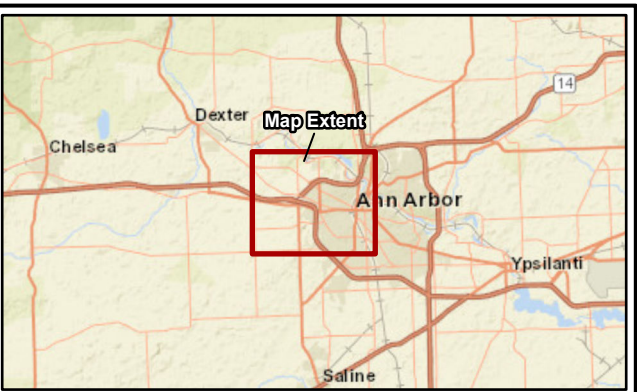
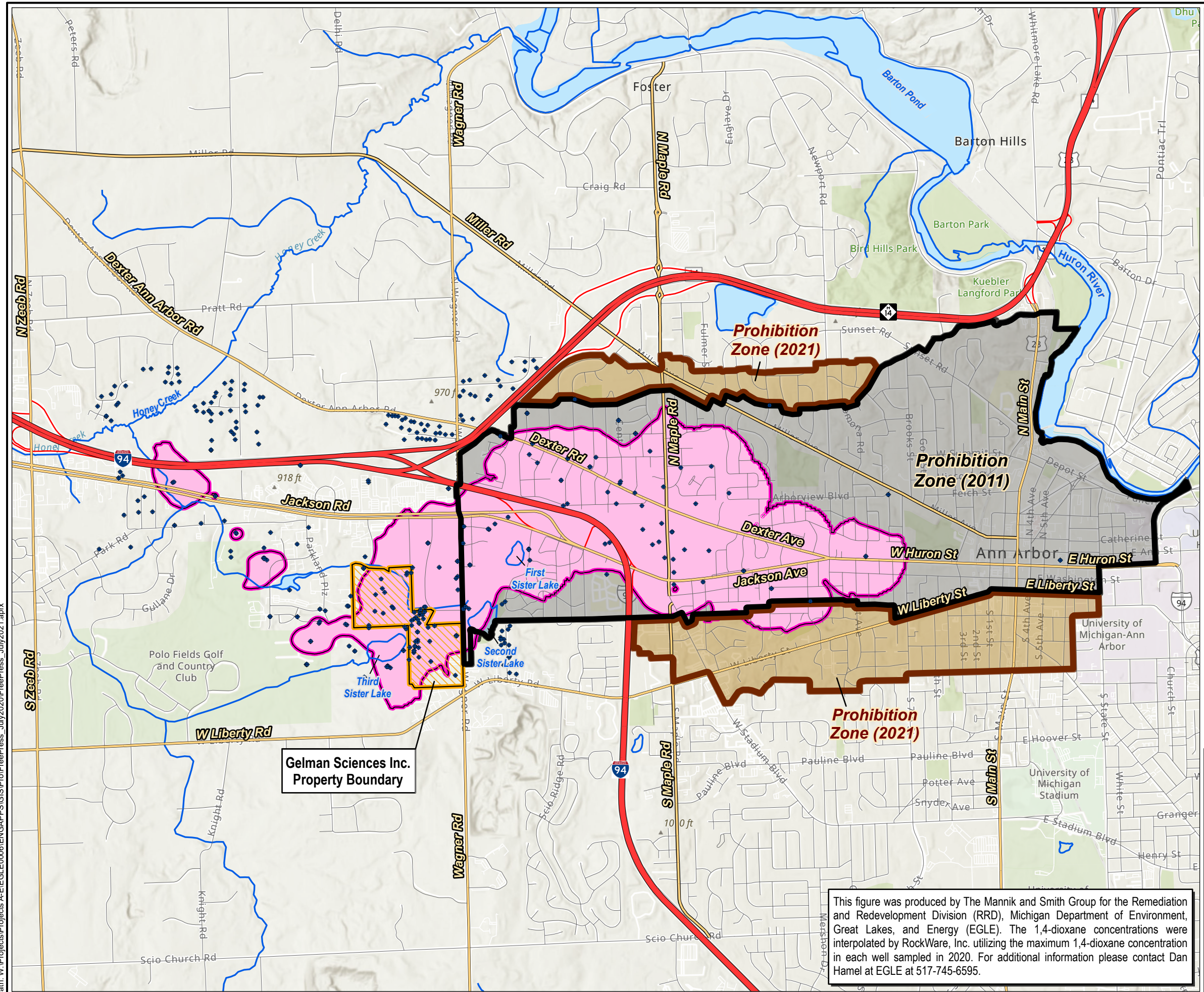
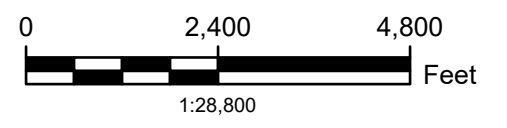


Date Saved: 07/13/21 3:16 PM
 Path: W:\Projects\Projects A-EGLE\0006\ENG\PPS\GIS\Pro\FreePress_July2021\FreePress_July2021.aprx



- Extent of 1,4-dioxane greater than 7.2 ppb
- Sampled Well (2020)
- Approximate Gelman Sciences Inc. Property Boundary
- Prohibition Zone Boundary (2011)
- Prohibition Zone Boundary (2021)
- Surface Water Feature



Basemap Source: ESRI World Topographic Map Service



1,4-DIOXANE GROUNDWATER CONTAMINATION (2020)

Gelman Sciences Inc. Site
 Washtenaw County, Scio Township, Michigan

DATE	DRAWN BY	DESIGNED BY	PROJECT NO.
07/13/21	KRB	KRB	EGLE0006

This figure was produced by The Mannik and Smith Group for the Remediation and Redevelopment Division (RRD), Michigan Department of Environment, Great Lakes, and Energy (EGLE). The 1,4-dioxane concentrations were interpolated by RockWare, Inc. utilizing the maximum 1,4-dioxane concentration in each well sampled in 2020. For additional information please contact Dan Hamel at EGLE at 517-745-6595.

The depth to 1,4-Dioxane contamination in groundwater is variable throughout the plume and the depth to contamination is not represented on this 2D plume map.