

How many firefighters does
it take?

How many firefighters does it take to handle a medical emergency?

- 2-4 firefighters
 - Provide patient care
 - Incident reporting
 - Provide info to/assist ambulance personnel with equipment and patient handling
- 2-3 ambulance personnel
 - Provide advanced procedures
 - Transport to hospital
- Total: 4-7 people



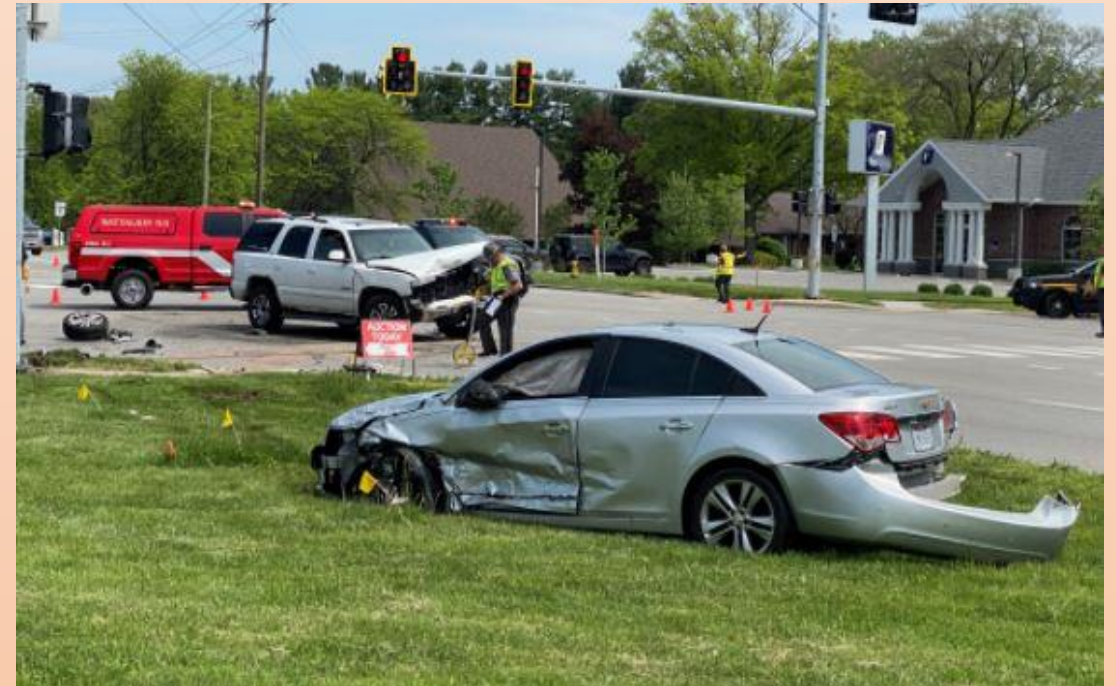
How many firefighters does it take to fight a car fire?

- 1 pump operator
- 2 firefighters to manage the hose line
- 1 incident commander
- 2-3 more to open hood/doors and other assistance
- Generally, we have enough water on our engine to fight a car fire
- Total: 4-7



How many people does it take to manage a car accident?

- 1 driver/pump operator
- 1 incident commander
- 2 to provide patient care
- 1-2 to control hazards/fluids
- 2-3 ambulance personnel (per injured person)



- Total:7-9

How many people does it take to manage a vehicle extrication?

- 1 driver/pump operator
 - 1 incident commander
 - 1-2 to stabilize vehicle
 - 1-3 to operate tools
 - 1-2 to control hazards/fluids
 - 2 to provide patient care
 - 2-3 ambulance personnel
-
- Total: 9-14



How many firefighters does it take to fight a tractor-trailer fire?

- 1 pump operator
- 1 incident commander
- 2-4 to manage hose lines
- 2-4 to use tools to open trailer/expose burning materials
- If not within 900' of municipal water 1-2 water tankers (2-4 more people)
- Ordinary combustibles, not hazardous contents
- Total: 8-14



How many firefighters does it take to fight a house fire?

- 1 pump operator
- 1 incident commander
- 1 incident commander aid/accountability officer
- 2-4 to manage hose line (1-2 lines)
- 2 on backup line
- 2-3 to search for occupants
- 2-4 people for “RIT” crew*



How many firefighters does it take to fight a house fire?

- 2-3 to ventilate the building
- 2-3 to establish a water supply (6-8 if rural)

- Total 15-28 people

